

# Behavioral HealthChoices

## An Integrated Human Services Model

Matthew Hurford, MD

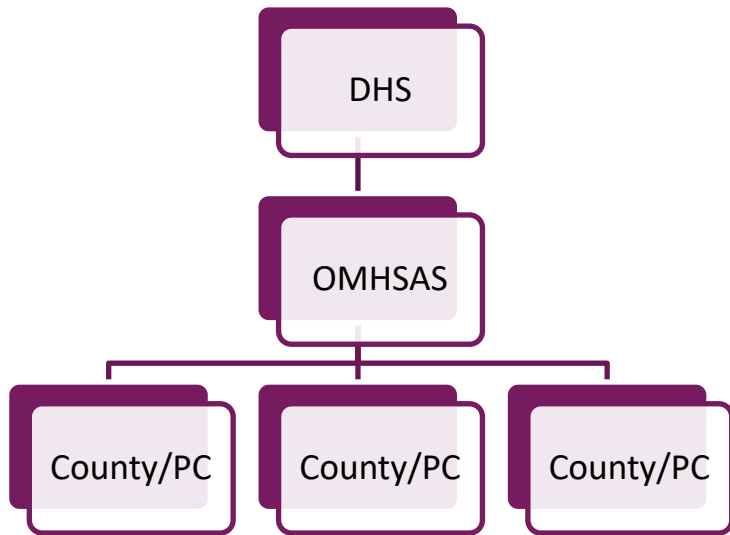
James Schuster, MD

Jack Carroll

# Behavioral HealthChoices

- HealthChoices is PA's mandatory managed care program for Medical Assistance recipients
- Goals:
  - 1) Improve access to health care services
  - 2) Improve quality of care available
  - 3) Stabilize Medical Assistance spending
- Three components: physical health, long term supportive services and behavioral health

# Behavioral HealthChoices: An Integrated Human Services Model



- Oversight by the Office of Mental Health and Substance Abuse Services (OMHSAS) in the Department of Human Services (DHS)

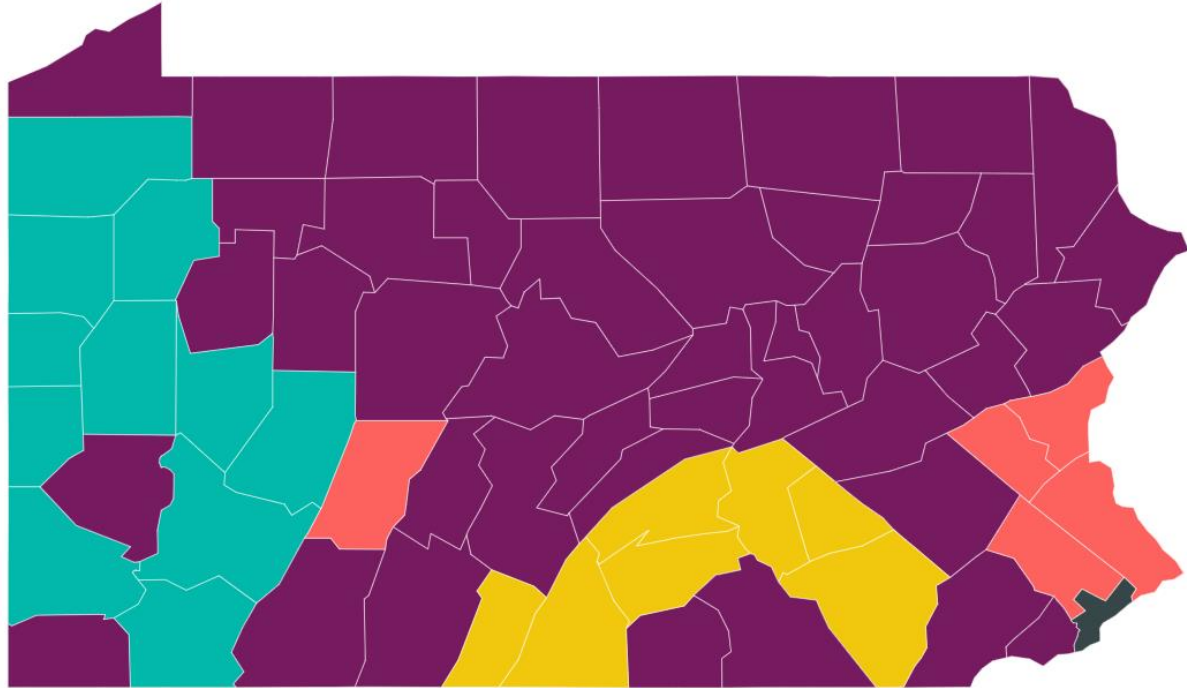
- Behavioral HealthChoices leverages the historic county role in administering mental health, substance use and human services
- Counties hold the “right of first opportunity” to administer funding for their Medicaid beneficiaries

➤ Rationale: integration of funding for behavioral health at the county level allows for local coordination of vital health and human services

# Behavioral HealthChoices Contracting and Administration

- Commonwealth issues contracts to the counties (or their administrative entities) who serve as primary contractors (PCs) for BH HealthChoices
  - These contracts are “at-risk”: counties/PCs are responsible for funding all medically necessary BH services under capitated rates
- Capitated rates are actuarially established annually by DHS/Mercer based on past year’s claims and projected service utilization
- Counties/PCs may hold the risk, share it or download it to a behavioral health managed care organization (BH-MCO)

# Counties/Primary Contractors Partner with Behavioral Health Managed Care Organizations



- |                                  |                             |
|----------------------------------|-----------------------------|
| Beacon Health Options            | Community Behavioral Health |
| Magellan Behavioral Health       | PerformCare                 |
| Community Care Behavioral Health |                             |

- All 67 counties participate in Behavioral HealthChoices
- Counties/Primary Contractors select Behavioral Health Managed Care Organizations (BH-MCOs)
- There are currently 5 BH-MCOs serving 4.5M HealthChoices members
  - Beacon Health Options
  - Community Behavioral Health
  - Community Care Behavioral Health
  - Magellan Behavioral Health
  - PerformCare

# Investing and Reinvesting in Communities

- Counties do not retain funds from medical savings
- Instead, up to 3% surplus can be used for state-approved reinvestment plans
- Reinvestment plans enhance local BH services and can address social determinants of health like housing and food insecurity



# Example: Multiple Partnerships to Enhance Housing Status

- Evidence-based
  - Permanent Supportive Housing
  - Housing First Model
- Housing Support Agency provides housing specialists while HealthChoices provides community supports and engagement with BH and PH providers



# Effective Use of Value-Based Purchasing Strategies



Implementation of Health Homes for individuals with serious mental illness (SMI), children, and members with substance use disorder (SUD)



Increasing the rate of competitive employment



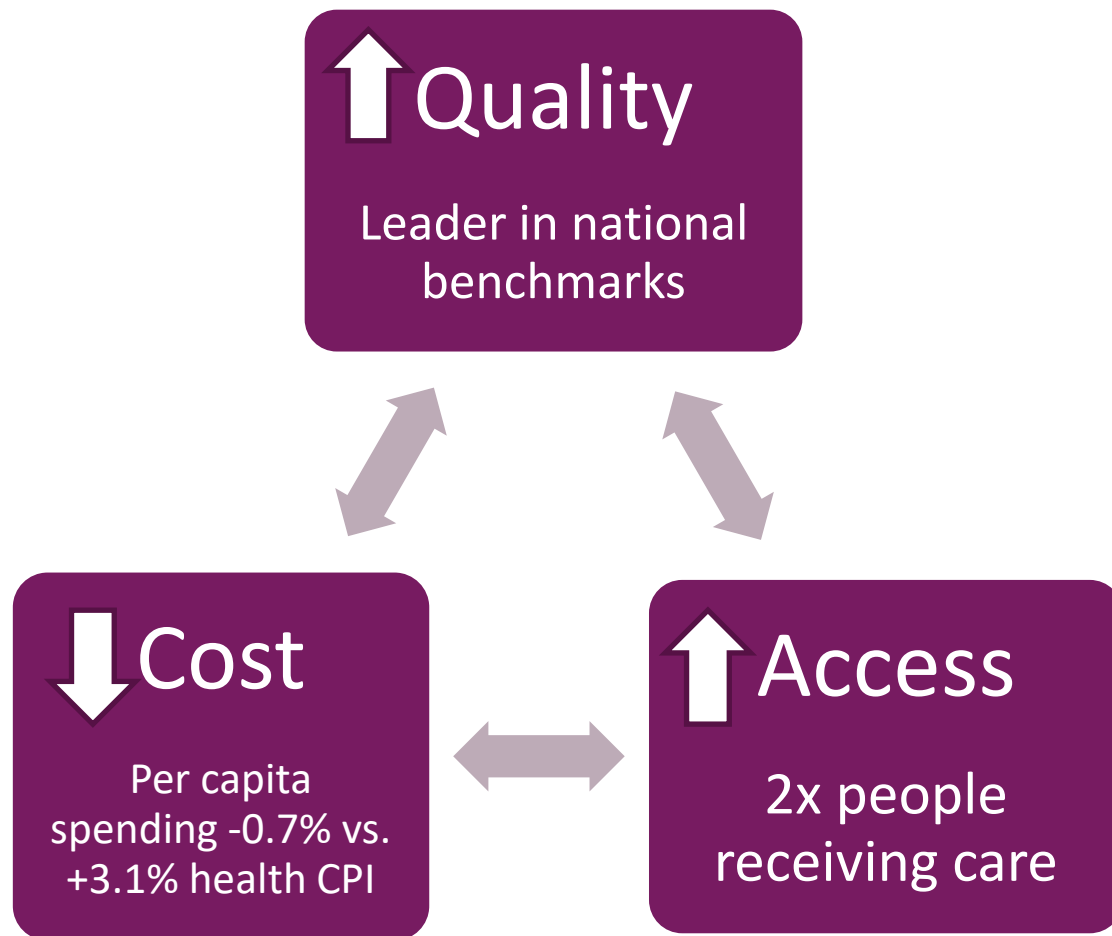
Decreasing readmission rates



Increasing post-hospital engagement



# Behavioral HealthChoices Has Been a “Triple Aim” Success



Mental Health America consistently rates Pennsylvania among the top three states overall for access to care, quality, and mental illness prevalence

# Health Integration with Medicaid Physical Health Plans and Providers

- Focus is on enhancing integration in provider settings
- Behavioral Health Home Plus
- Collaborative Care
- Co-located Services
- Integrated Care Plans between BH and PH managed care plans



# Strong Focus on BH in Community HealthChoices

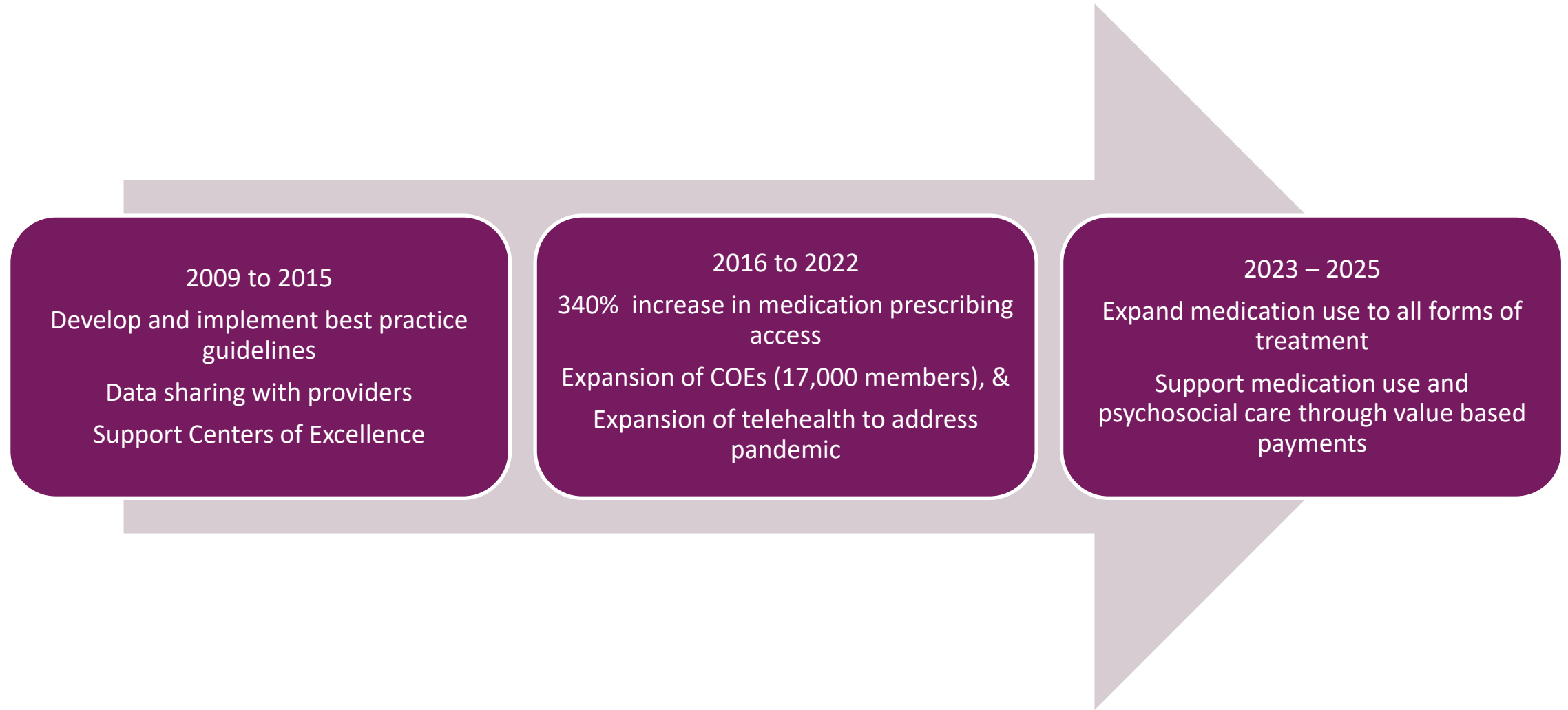
- Daily collaboration between plans
- New Program Development
  - Community Stabilization Teams of BH specialists
  - BH Care Management for CHC members
- Training and Education of our staff and providers
- Close engagement with other stakeholders (e.g. nursing facilities and Area Agencies on Aging)

# Multiple Partnerships with Educational Settings

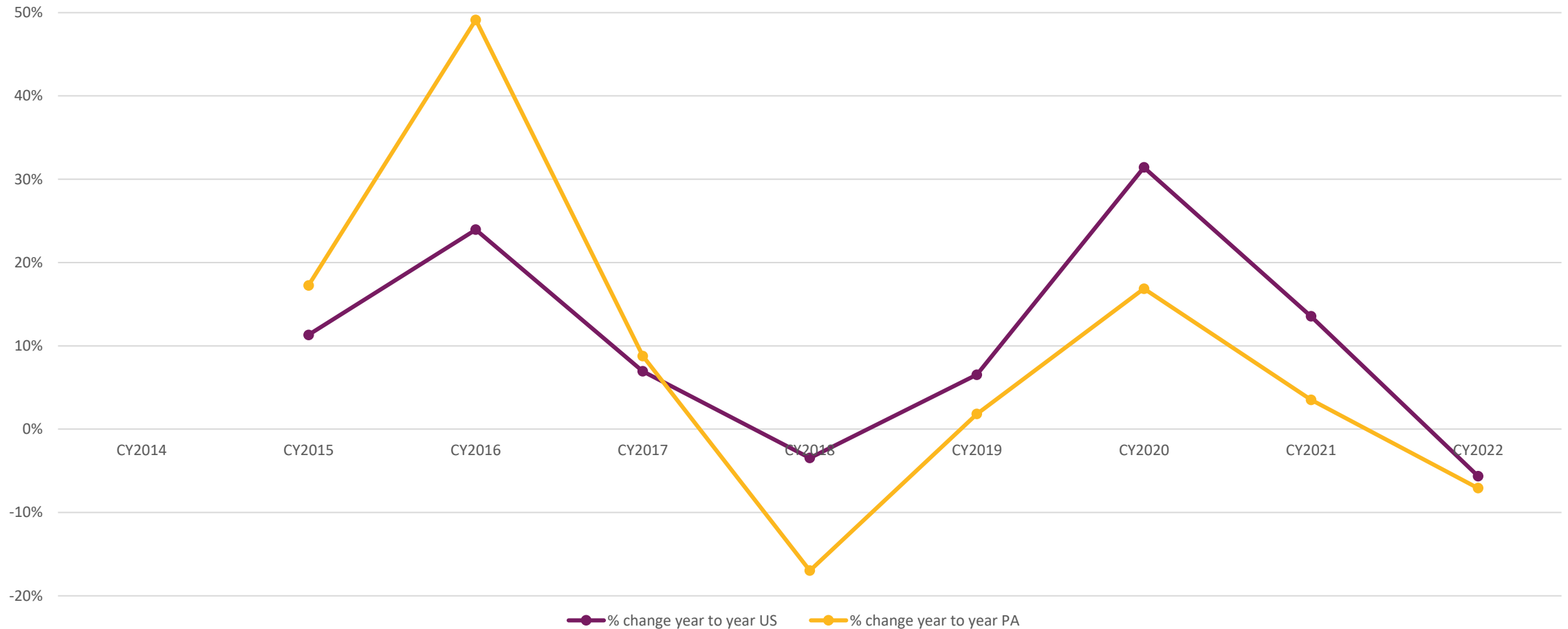
- Community and School Based teams of behavior specialists are integrated with educational services
  - 69 teams in 50 school districts
- Widespread placement of mental health professionals in schools for outpatient treatment



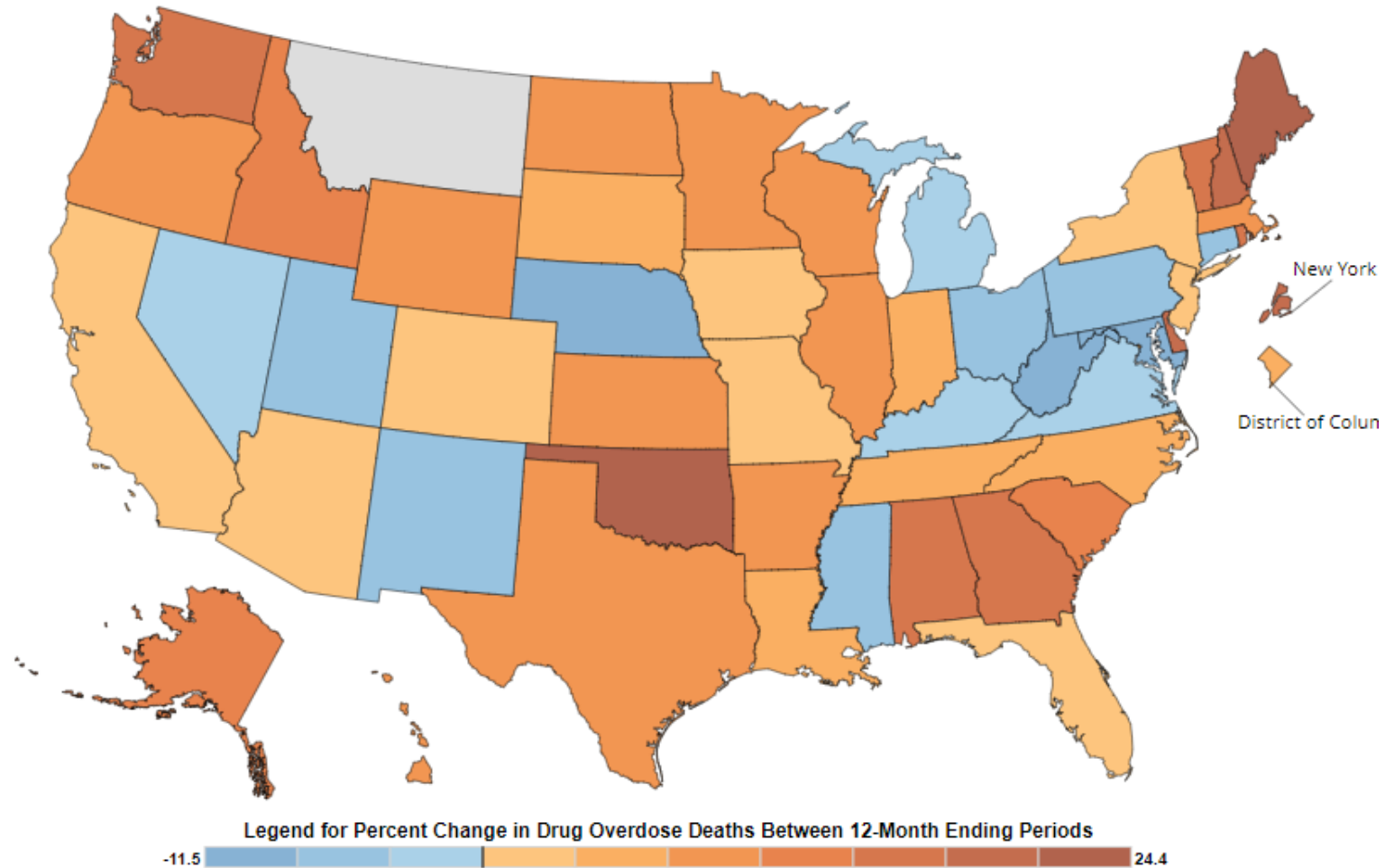
# Addressing the Opioid Crisis



# Opioid Death Rate Trend in PA Better than National Reports



1b. Percent Change in Predicted 12 Month-ending Count of Drug Overdose Deaths, by Jurisdiction: August 2021 to August 2022



# Successful Integration of Behavioral HealthChoices & County Services

## Supporting Individuals Transitioning from Forensic Settings

- County funding brings Certified Recovery Specialists (CRS) from outpatient treatment programs into the county jail to educate inmates on the treatment of opioid use disorder
- Upon release, many individuals are Medicaid eligible and services can be funded with HealthChoices funding.

## Coordination of Medicaid with other County funding streams

- Many Medicaid eligible individuals are involved with multiple county human services and criminal justice departments
- Counties coordinate across departments and facilitate coordination of services
- Services and departments involved in many counties include:
  - Adult probation offices                      Housing support services
  - Child welfare agencies                      Courts and jails
  - County jails                                      County aging agencies



# Moving Forward Together

- PA's HealthChoices program is a national leader in:
  - Health and human services integration
  - Physical and behavioral health integration
  - Creative use of BH reinvestment funds to address social determinants
  - Effective management of costs for individuals with serious mental illness
- We are poised for new achievements that effectively use Medicaid funding for enhanced wellness and wellbeing for PA residents